



GUARDIAN

Real-time Heart Attack Detection for Peace of Mind^{3,5}

If you have had a heart attack, you ARE at risk of another

Every **2.6 minutes**² a heart attack survivor in the US experiences a second event.



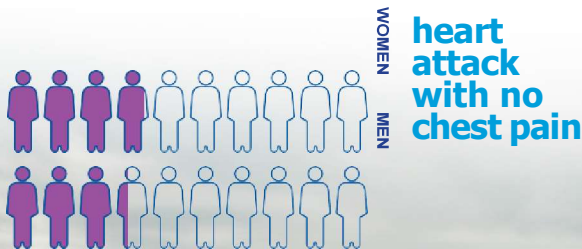
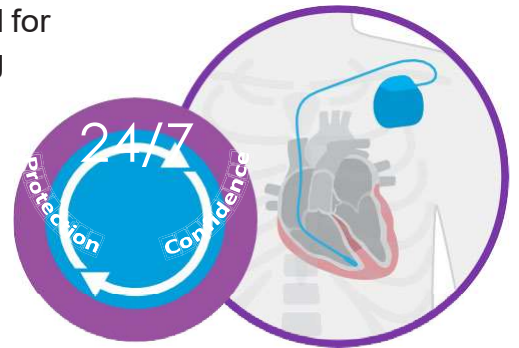
1 in 5 heart attack survivors experience a second heart attack within 5 years¹



What is the GUARDIAN™ and how does it help?

The **GUARDIAN** is an implanted heart monitoring and alerting device. The **GUARDIAN** offers continuous cardiac monitoring of your heart's electrical signal 24 hours a day, 7 days a week. It examines the heart signal for changes which may indicate that your heart muscle is not getting enough oxygen due to a coronary artery blockage and if it detects a change, **GUARDIAN** alerts you to seek assistance.

The **GUARDIAN** can detect events even when a person has no symptoms or has symptoms that are not typical.



Almost **4 in 10** women and over **3 in 10** men who have heart attacks don't feel any chest pain at all.³



[Learn More](#)



avertix

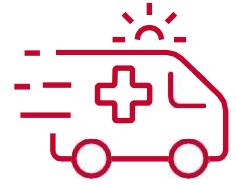
Keeping Families Together.



Faster time to ED may mean less damage to your heart

Upon onset of a heart attack, **GUARDIAN** notifies you with an **Emergency Alarm** so you can get to an ED promptly and receive the early intervention that is most beneficial in reducing damage to your heart.

And **GUARDIAN** detects the **45%** of heart attacks that occur without symptoms⁷ (Asymptomatic Silent Myocardial Infarction [Silent MI]).



Emergency Alarm

GUARDIAN offers protection beyond heart attacks

GUARDIAN is able to detect other serious heart conditions such as atrial fibrillation, atrial flutter and other arrhythmias, and a **See Dr. Alert** will notify you to follow up with your doctor.



See Dr. Alert

GUARDIAN gets your attention

When **GUARDIAN** detects a change in your heart's condition that requires attention:

- 1 VIBRATION:** The **GUARDIAN** implant device (IMD) vibrates urgently for the **Emergency Alarm** or less urgently for the **See Dr. Alert**
- 2 AUDIO:** The external handheld device (EXD) emits an audio beep that corresponds to the vibration pattern of the IMD
- 3 VISUAL:** The EXD flashes **RED** for the **Emergency Alarm** or **YELLOW** for the **See Dr. Alert**



Quality of Life Impact⁵

Heart attack survivors who received the **GUARDIAN** reported improved quality of life.



90%

felt safer and more in control



69%

experienced less anxiety



61%

worried less when exercising



50%

experienced better sleep

The information provided in this leaflet is for information purposes only and is not intended to take the place of the advice of a registered medical practitioner. Please discuss any concerns you may have regarding your health with your physician.

¹ www.heart.org/en/health-topics/heart-attack/life-after-a-heart-attack

² www.survivorshaveheart.com/statistics-and-risk.html

³ Gibson, M., et al. Implantable Cardiac Alert System for Early Recognition of ST-Segment Elevation Myocardial Infarction. *JACC*. 2019; 73(15):1919-1927

⁴ www.avertix.com

⁵ ALERTS Trial — *American Heart Journal*, Volume 168, Issue 2, August 2014, Pages 168-174 <https://doi.org/10.1016/j.ahj.2014.05.008>

⁶ www.cdc.gov/nchs/data/nhamcs/web_tables/2020-nhamcs-ed-web-tables-508.pdf

⁷ <https://www.health.harvard.edu/heart-health/the-danger-of-silent-heart-attacks>



avertix

Avertix Medical, Inc.

40 Christopher Way, Suite 201, Eatontown, NJ 07724

Office: 732.542.5551 avertix.com

Talk with your Doctor and see if GUARDIAN is right for you.